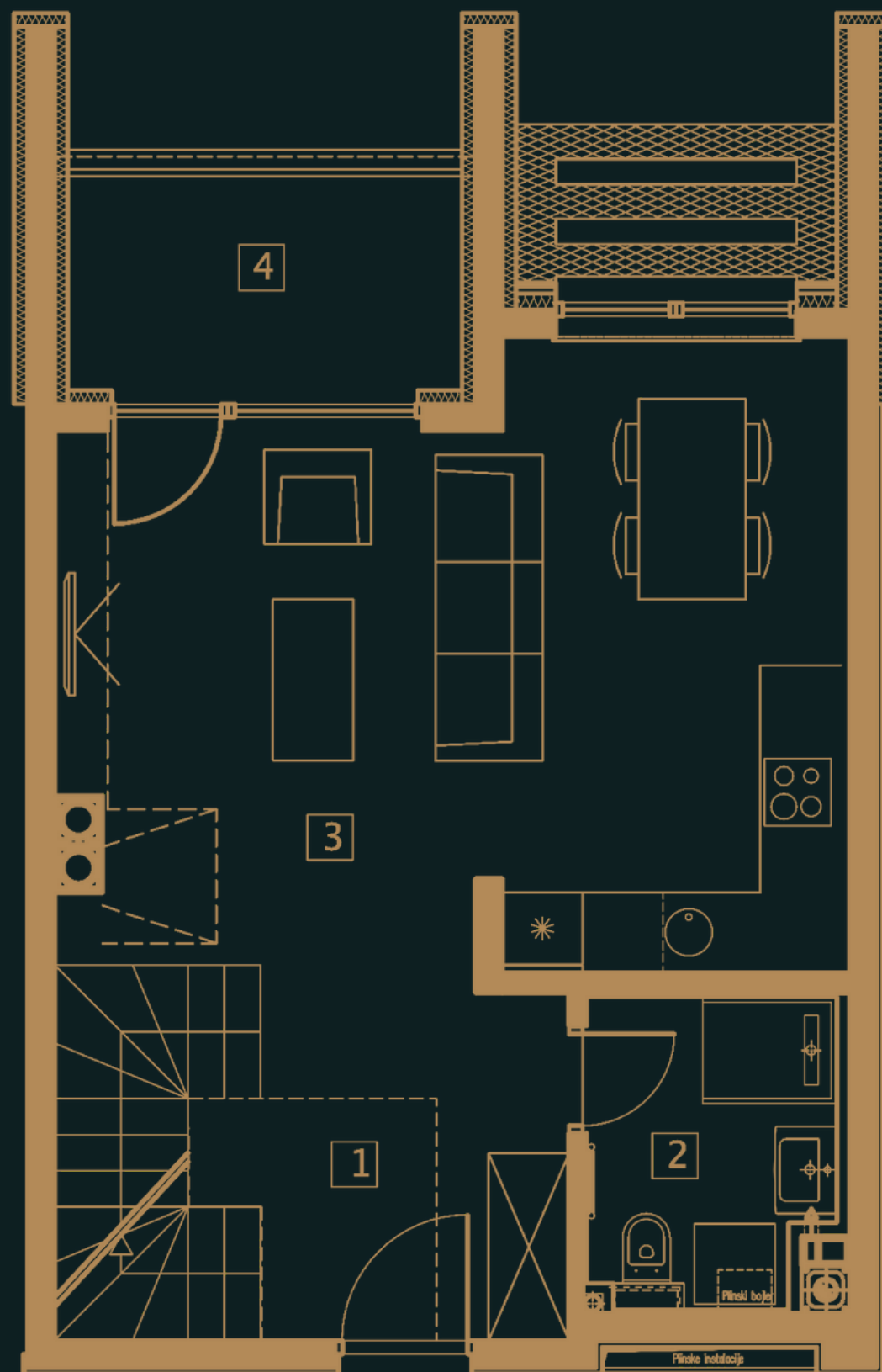


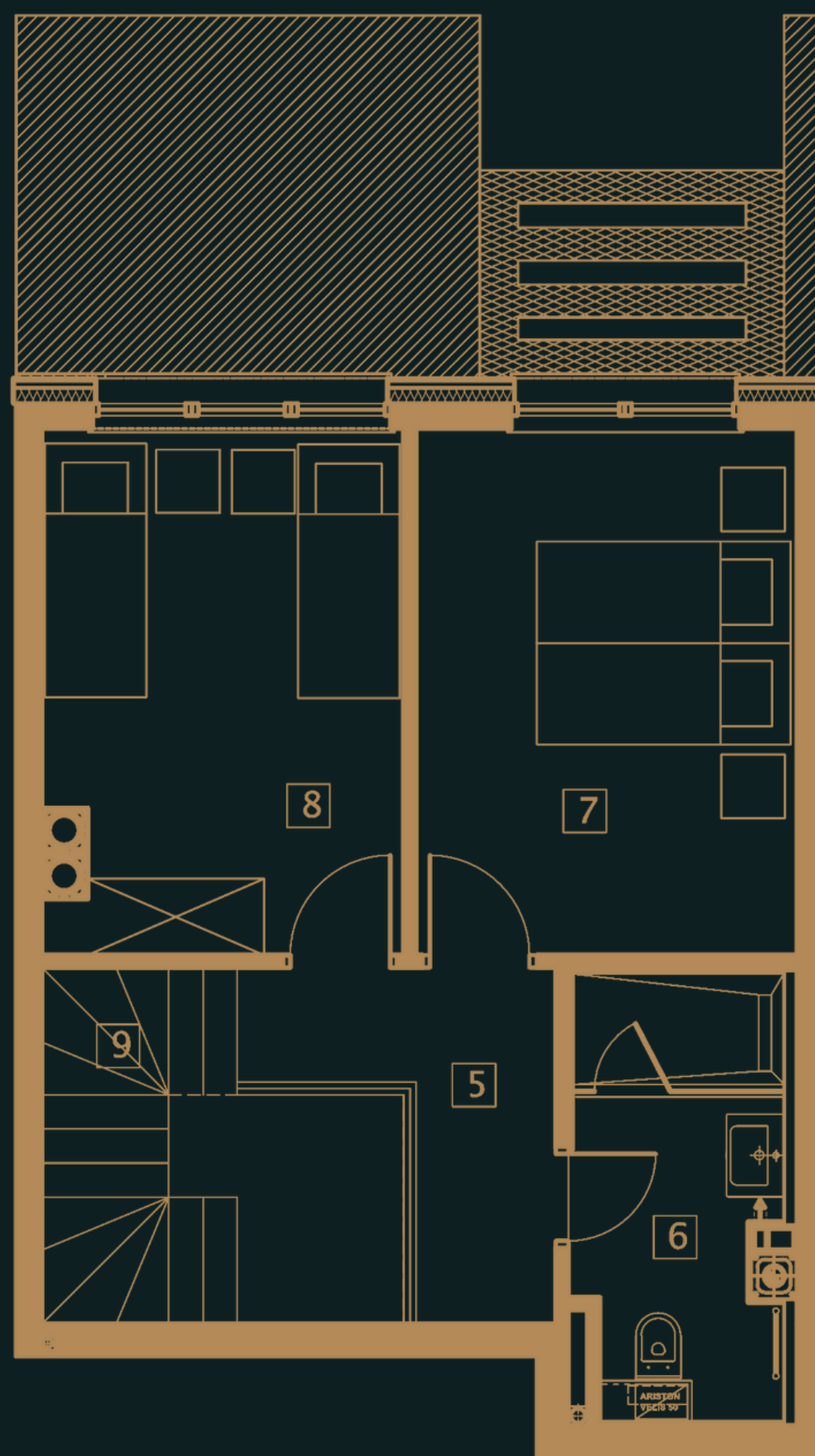
Bjelašnica

NOVOGRADNJA

APARTMAN 3.01



AP 3.01
P=73,4m²



| | | |
|---|---|--------------------|
| 1 | HOL | 8.3m ² |
| 2 | KUPATILO | 4.1m ² |
| 3 | DNEVNI BORAVAK, TRPEZARIJA i KUHINJA | 25.2m ² |
| 4 | LOBA P=4.7m ² x0,75= | 3.5m ² |
| 5 | HODNIK GALERIJA | 4.7m ² |
| 6 | KUPATILO | 5.7m ² |
| 7 | SOBA 1 12,4X0,75 | 9,3m ² |
| 8 | SOBA 2 11,6X0,75 | 8,7m ² |
| 9 | STEPENIŠTE | 3.9m ² |

UKUPNO 73,4m²

061 220 446

062 180 107