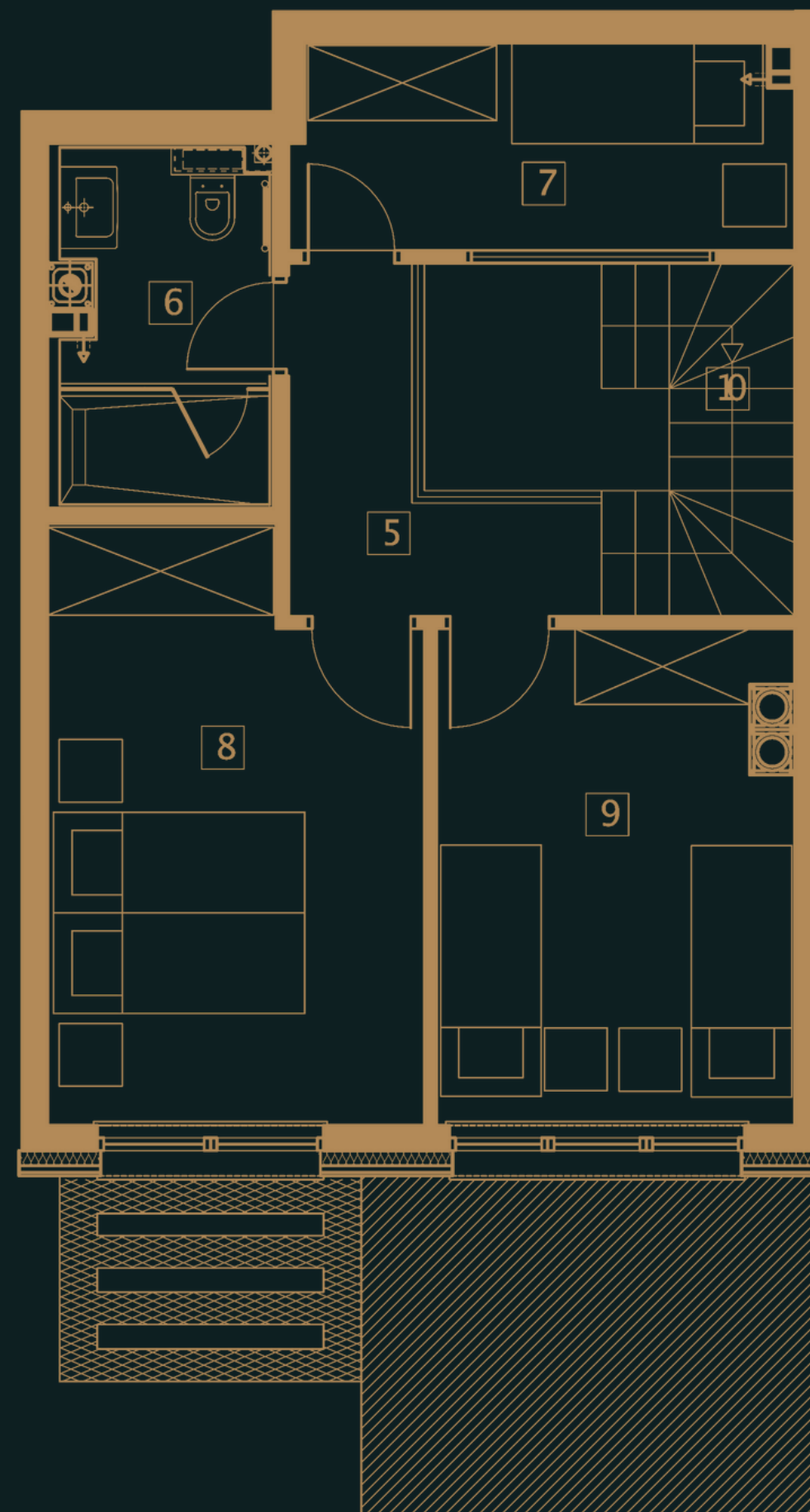
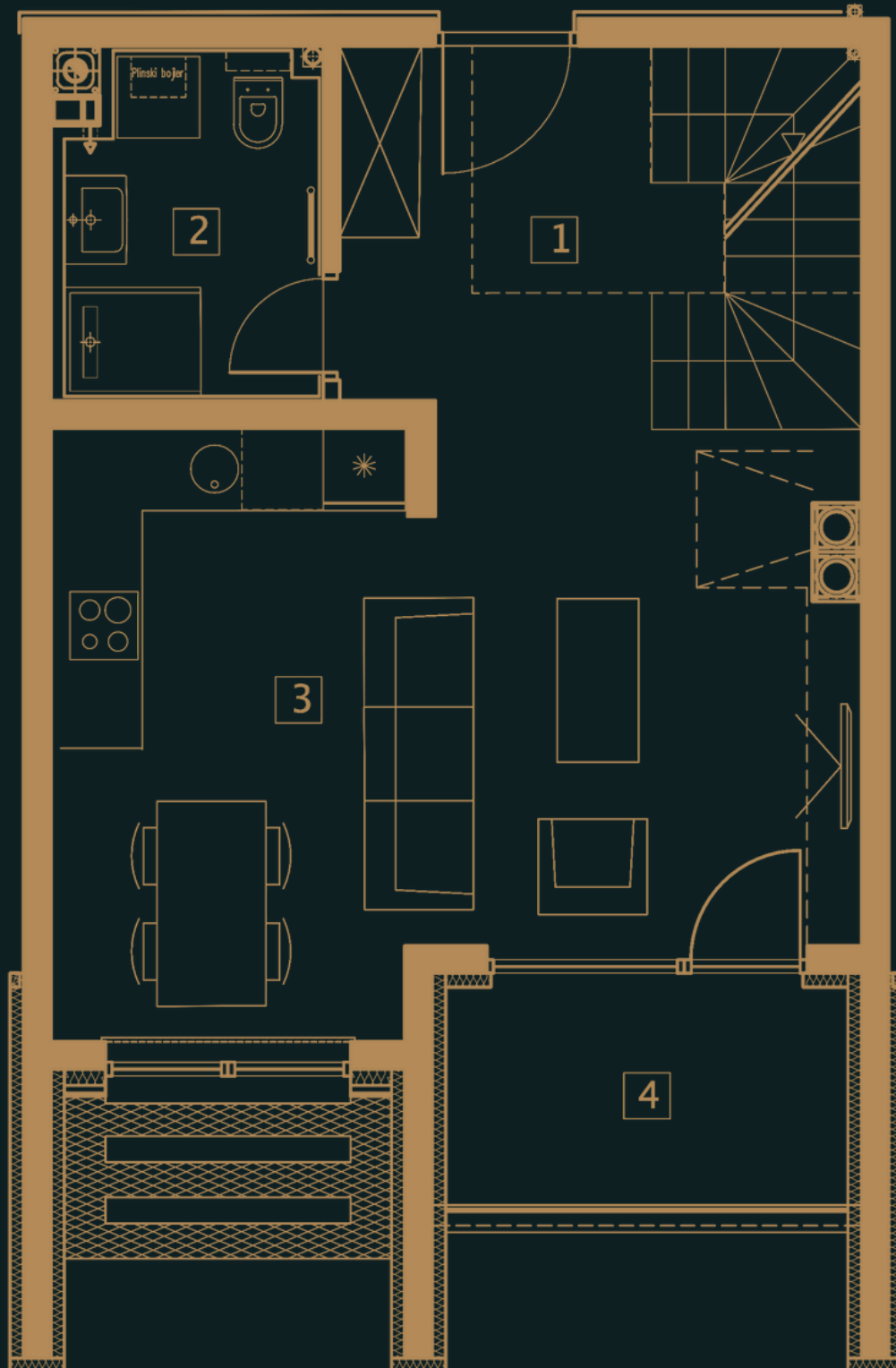


Josipa Štadlera br. 6

# Bjelašnica

NOVOGRADNJA

AP 3.05  
P=84,0m<sup>2</sup>



## APARTMAN 3.05

1	HOL	8.3m <sup>2</sup>
2	KUPATILO	4.5m <sup>2</sup>
3	DNEVNI BORAVAK, TRPEZARIJA i KUHINJA	24.0m <sup>2</sup>
4	LOĐA 4.7m <sup>2</sup> x0,75=	3.5m <sup>2</sup>
5	HODNIK GALERIJA	4.5m <sup>2</sup>
6	KUPATILO	4.5m <sup>2</sup>
7	VIŠENAMJENSKA PROSTORIJA	6.4m <sup>2</sup>
8	SOBA 1	13.4m <sup>2</sup>
9	SOBA 2	11.0m <sup>2</sup>
10	STEPENIŠTE	3.9m <sup>2</sup>
<b>UKUPNO</b>		<b>84,0m<sup>2</sup></b>

061 220 446

062 180 107