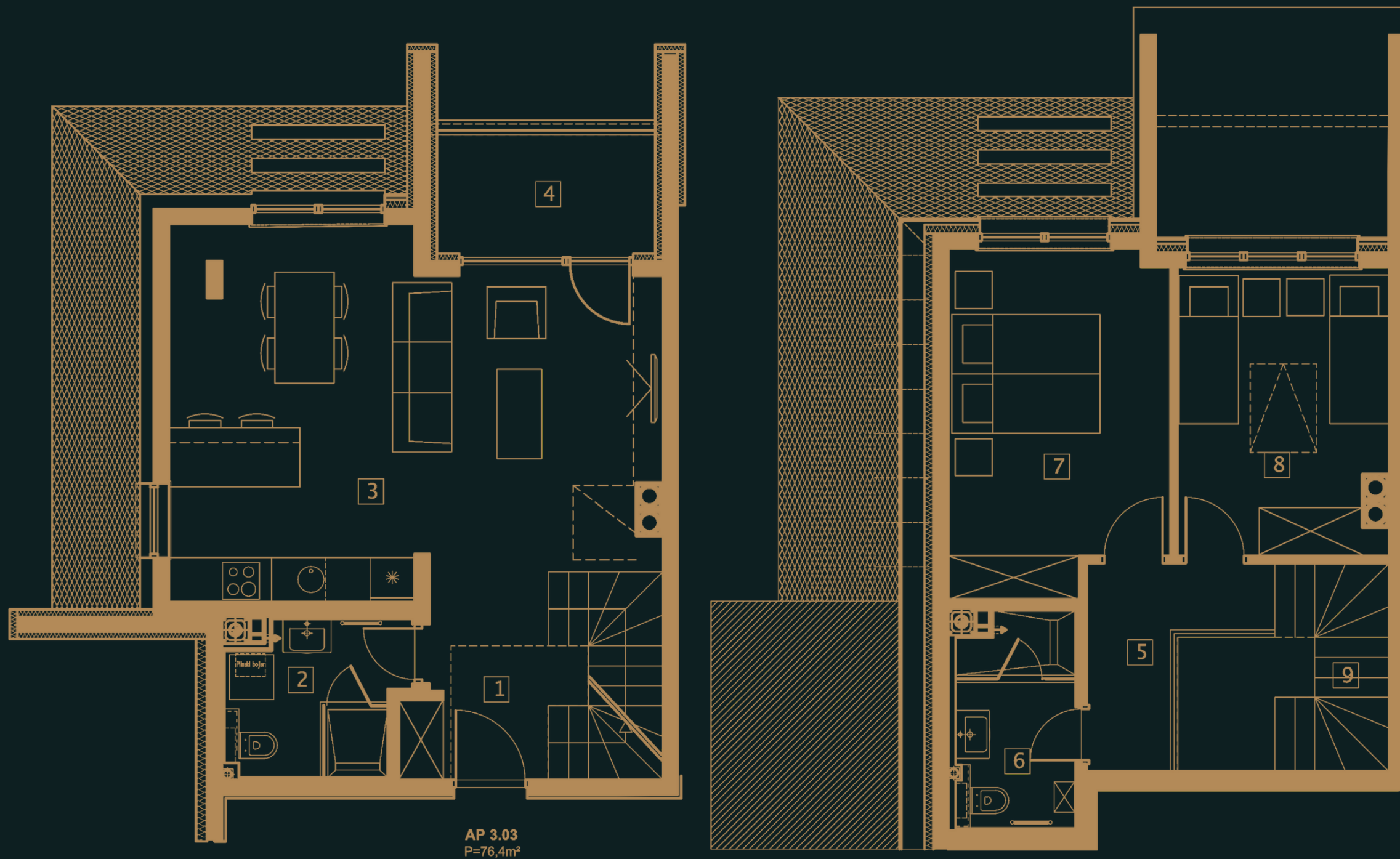


Bjelašnica

NOVOGRADNJA

APARTMAN 3.03



AP 3.03
P=76,4m²

1	HOL	7.0m ²
2	KUPATILO	4.7m ²
3	DNEVNI BORAVAK, TRPEZARIJA i KUHINJA	30.1m ²
4	LOĐA P=4.7m ² x0,75=	3.5m ²
5	HODNIK GALERIJA	4.7m ²
6	KUPATILO	4.6m ²
7	SOBA 1 13,4m ² x0,75=	10,0m ²
8	SOBA 2 10,69m ² x0,75=	8,0m ²
9	STEPENIŠTE	3.9m ²

UKUPNO 76,4m²

061 220 446

062 180 107